



for the Palm Computing Platform

Premium Edition

User Documentation



Bachmann Software

270 Sparta Avenue
Suite 104, PMB 318
Sparta, NJ 07871
United States

PrintBoy copyright 1999-2003 by Bachmann Software and Services, LLC and its licensors. All rights reserved. Palm OS is a registered trademark, and Palm and Palm Powered are trademarks of Palm, Inc. All other products, services and company names are trademarks, registered trademarks or services marks of their respective owners.

This documentation may be printed by the licensee for personal use. No part of this documentation may be reproduced or transmitted in any form by any means, electronic or mechanical, including photocopying, recording, or any information storage and retrieval system, without permission in writing from Bachmann Software and Services, LLC.

Bachmann Software and Services, PrintBoy, the PrintBoy logo, Bachmann Print Manager, PrintBoy Anywhere, Deluxe, PrintBoy Documents, PrintBoy Spreadsheet, PrintBoy Database and the Bachmann Software and Services logo are registered trademarks of Bachmann Software and Services.

All software and documentation are subject to the license agreement found at the end of this document.

How to Contact Bachmann Software:

Bachmann Software
270 Sparta Ave, Suite 104, PMB 318
Sparta, NJ 07871
United States

To upgrade to our most full functioned printing and file management product, Bachmann Utilities, please contact us by :

Registering at our website: <http://www.bachmannsoftware.com/pbpremregister>

Voice: (973) 729-9427

Fax: (973) 729-8553

E-Mail: sales@bachmannsoftware.com

Or visit us on the World Wide Web: <http://www.bachmannsoftware.com>

For Technical Support please visit us on the Web for the most recent software updates, answers to Frequently Asked Questions, and instructions on how to contact us for support issues. **You will need to register in order to receive Technical Support.**

Bachmann PrintBoy License Agreement

PLEASE READ THIS LICENSE CAREFULLY BEFORE USING THE SOFTWARE. BY USING THE SOFTWARE YOU ARE AGREEING TO BE BOUND BY THE TERMS OF THIS LICENSE. IF YOU DO NOT AGREE TO THE TERMS OF THIS AGREEMENT, PROMPTLY DESTROY ALL COPIES OF THE SOFTWARE.

1. **License.** The application, demonstration, system and other software accompanying this License, whether on disk, read only memory or on any other media (the "Software"), the related documentation and fonts are licensed to you by Bachmann Software and Services and its Licensors. This license allows you to use the Software on a single computer. You may use a copy of the software on a home or portable computer as long as the extra copy is never loaded at the same time the software is loaded on the primary computer on which you use the Software. You may make one copy of the Software in machine readable form for backup purposes. You also transfer all your license rights in the Software, the backup copy of the Software, the related documentation and a copy of this License to another party, provided the other party reads and agrees to accept the terms and conditions of this License.
2. **Restrictions.** The Software contains copyrighted material, trade secrets, and other proprietary material. In order to protect them, and except as permitted by applicable legislation, you may not decompile, reverse engineer, disassemble or otherwise reduce the Software to a human perceivable form. You may not modify, rent, lease, loan, distribute or create derivative works based upon the software in whole or in part. You may use the Software to develop freeware or shareware.
3. You may not use the Software to create a product which competes in any way with the Software.
4. Software end users may not use the "run-time modules" or any other Software components for development purposes.
5. You agree to indemnify, hold harmless and defend Bachmann Software and Services, LLC and its suppliers from and against any and all claims or lawsuits including attorneys fees that arise or result from the use and distribution of your product. If any of the conditions set forth in paragraphs 1 through 4 are breached, such breach shall constitute an unlawful use of the Software, and you shall be prosecuted to the full extent of the law. Furthermore, you shall be liable to Bachmann Software and Services, LLC for all damages caused by such breach and unlawful use of the software, including attorney's fees and costs incurred in any action, lawsuit or claim brought or filed to redress the breach of this agreement.

LIMITED WARRANTY

LIMITED WARRANTY. Bachmann Software and Services, LLC warrants that the Software will perform substantially in accordance with the accompanying written materials for a period of thirty (30) days from the date of receipt.

CUSTOMER REMEDIES. Bachmann Software and Services, LLC and its suppliers' entire liability and your exclusive remedy in the event of a defect in materials and workmanship of the Software under normal use during the Limited Warranty period shall be, at Bachmann Software and Services, LLC's option, either a) return of the price paid by you in exchange for all Software contents including written materials; or b) repair or replacement of the Software that does not meet Bachmann Software and Services, LLC's Limited Warranty and which is returned to Bachmann Software and Services, LLC with a copy of your receipt. This Limited Warranty is void if failure of the Software has resulted from accident, abuse or misapplication. Any replacement Software will be warranted for the remainder of the original warranty period or ten (10) days, whichever is longer.

NO OTHER WARRANTIES. There are no other warranties to the maximum extent permitted by applicable law. Bachmann Software and Services, LLC and its suppliers disclaim all other warranties, either express or implied, including but not limited to implied warranties of merchantability and fitness for a particular purpose, with regard to the Software, the accompanying written materials and any accompanying hardware.

NO LIABILITIES FOR CONSEQUENTIAL OR INCIDENTAL DAMAGES. To the maximum extent permitted by law, in no event shall Bachmann Software and Services, LLC or its suppliers be liable for any damages whatsoever (including without limitation, damages for loss of business profits, business interruption, loss of business information, or any other pecuniary loss) arising out of the use of or inability to use this Bachmann Software and Services, LLC product, even if Bachmann Software and Services, LLC has been advised of the possibility of such damages.

BACHMANN PRINTBOY LICENSE AGREEMENT	3
1. INTRODUCTION: WELCOME TO PRINTBOY!	7
1.1. What is PrintBoy™ Premium Edition?	7
1.2. PrintBoy	7
1.3. PrintBoy Documents.....	7
1.4. PrintBoy Spreadsheet.....	7
1.5. PrintBoy Presentation.....	8
1.6. PrintBoy Database	8
1.7. The PrintBoy Print Engine and Printer Drivers.....	8
1.8. UPGRADING TO BACHMANN UTILITIES.....	8
What Is FilePoint Pro?	9
1.9. How Do I Stay Updated on the Latest PrintBoy Enhancements!.....	10
2.0 GETTING STARTED WITH PRINTBOY	11
2.1 Pre-Installation Checklist:	11
2.2 Installing PrintBoy:.....	12
Microsoft Windows	12
Macintosh.....	12
3. CONFIGURING YOUR PRINTER	14
3.1. Choosing Your Default Printer.....	14
3.2. Choosing a Printer Driver.....	14
3.3. Verifying Printer Settings	16
4. REMOVING PRINTBOY.....	19
5. PRINTING FROM PRINTBOY	20
5.1. The PrintBoy Shell Application.....	20
5.2. PrintBoy/Address.....	21
5.3. PrintBoy/DateBook.....	22
5.4. PrintBoy/To Do	23
5.5. PrintBoy/Memo	24
5.6. PrintBoy/Mail	25
5.7. PrintBoy/Clipboard	25
5.8. PrintBoy/Documents	27
The File List.....	28
Printing Options.....	28
Command Buttons	28
Printing a Document.....	28
5.9. PrintBoy Spreadsheet.....	30
The File List.....	30

Printing Options.....	31
Command Buttons	31
Printing a Spreadsheet.....	31
5.10. PrintBoy Presentation	33
5.11. PrintBoy Database.....	33
 6. REGISTERING AND TECHNICAL SUPPORT.....	 35
6.1. Registering Your Software	35
6.2. Obtaining Technical Support.....	35
 7. INTEGRATION WITH OTHER PALM APPLICATIONS: LAUNCHING PRINTBOY FROM OTHER PALM APPLICATIONS.....	 36
 APPENDIX A: PRINTER COMPATIBILITY MATRIX	 37

1. Introduction: Welcome to PrintBoy!

Thank you for selecting PrintBoy Premium Edition! This section of the manual describes what each PrintBoy product can do for you, and also describes what additional functionality you would receive by upgrading to Bachmann Utilities.

1.1. What is PrintBoy™ Premium Edition?

PrintBoy enables you to print information from your Palm™ Organizer directly to your printer through an infrared, serial, bluetooth or “network”/wireless connection.

PrintBoy Premium Edition comes complete with a suite of plug-in “applets”, small program modules that support printing of Dataviz Docs to Go™ documents, spreadsheets and presentations, addresses, appointments, to-dos, e-mails, memos and the clipboard. PrintBoy Premium Edition also supports printing database records, lists and reports from popular database software such as Dataviz SmartLists To Go™, Handmark’s MobileDB and 4.0 Student, DDH’s HanDBase, and more.

The following sections describe the major printing features of PrintBoy Premium.

1.2. PrintBoy

PrintBoy is a Palm software application that enables you to print data from the standard Palm OS based PIM applications – Address, Date Book, Memo Pad and To Do List. It also gives you the ability to print the data that you copied onto your clipboard. You can print your PIM data either by launching the PrintBoy icon or by using the “Send” menu function in each of the PIM applications.

1.3. PrintBoy Documents

PrintBoy Documents is a Palm software application that enables you to print documents that you have stored on your Palm™ Organizer directly to your printer.

PrintBoy Documents included in PrintBoy Premium supports the most popular file formats in use today by Document programs:

- Documents To Go™ by DataViz
- Wordsmith™ by Blue Nomad
- Quickword™ by Mobility Electronics (formerly Cutting Edge Software)
- MiniWrite™ by Solutions In Hand
- The Doc format has become a standard for storage of text-based content on Palm devices. Various vendors, all of which support the Doc format, have released a large number of converters, editors and readers.

1.4. PrintBoy Spreadsheet

PrintBoy Spreadsheet is a Palm software application that enables you to print spreadsheets that you have created and stored on your Palm™ Organizer.

This version of PrintBoy comes with the ability to print from

- Sheet To Go™ by Dataviz.
- QuickSheet™ program from Mobility Electronics (formerly Cutting Edge Software)
- MiniCalc™ from Solutions In Hand

PrintBoy Spreadsheet lets you print these spreadsheet files directly to your printer, in a format that is very similar to what you would expect if you printed a spreadsheet from your PC.

1.5. PrintBoy Presentation

PrintBoy Presentation is a Palm software application that enables you to print PowerPoint presentations that are transferred from your Desktop PC to your Palm™ Organizer.

This version of PrintBoy includes printing presentations from:

- Slideshow To Go™ by DataViz
- QuickPoint™ from Mobility Electronics (formerly Cutting Edge Software)

1.6. PrintBoy Database

PrintBoy Database is a Palm software application that enables you to print database records created and stored on your Palm™ Organizer using the following Palm programs:

- SmartLists To Go™ by DataViz
- HandDBase™ from DDH Software
- MobileDB from Handmark
- Student 4.0 from Handmark
- ThinkDB from ThinkingBytes (now SmartLists To Go)

PrintBoy Database works a bit differently than PrintBoy Documents or PrintBoy Spreadsheet in that PrintBoy Database is tightly integrated into the associated database program (ex. Smart List to Go). You can use Smart List to Go, MobileDB or HandDBase's Print menus to automatically print your data directly from within the application without having to launch a separate program.

PrintBoy Database lets you print directly to your printer through either an infrared or serial connection, in one of several formats: a list of records (tabular), or single record detail, or multi-record detail.

1.7. The PrintBoy Print Engine and Printer Drivers

PrintBoy leverages the power of our industry-standard Bachmann Print Manager print engine to create lightning-fast, formatted output against almost any printer. Simply connect your Palm to a printer using infrared, bluetooth or network connection, load the PrintBoy plug-in of your choice, and tap "print" – your information will be perfectly formatted and immediately printed on readable, full-size paper.

PrintBoy does not need a personal computer to print. Instead, PrintBoy comes with special print drivers that enable your Palm™ compatible handheld device to print directly to virtually any printer.

1.8. Upgrading to Bachmann Utilities

Special discounts are available to PrintBoy Premium Edition customers on upgrades to the full Bachmann Utilities software suite. For special discount pricing, please register on our website at <http://www.bachmannsoftware.com/pbpremregister>

What is Bachmann Utilities?

Organize-Find-Move-Save-Launch-File-Install

Turn your Palm PDA into a powerful handheld computer with essential software that let you manage, organize, find, move, save, print, launch, file, install and share your data, no matter where you are! As a PrintBoy customer, you can take advantage of a low cost upgrade to Bachmann Utilities.

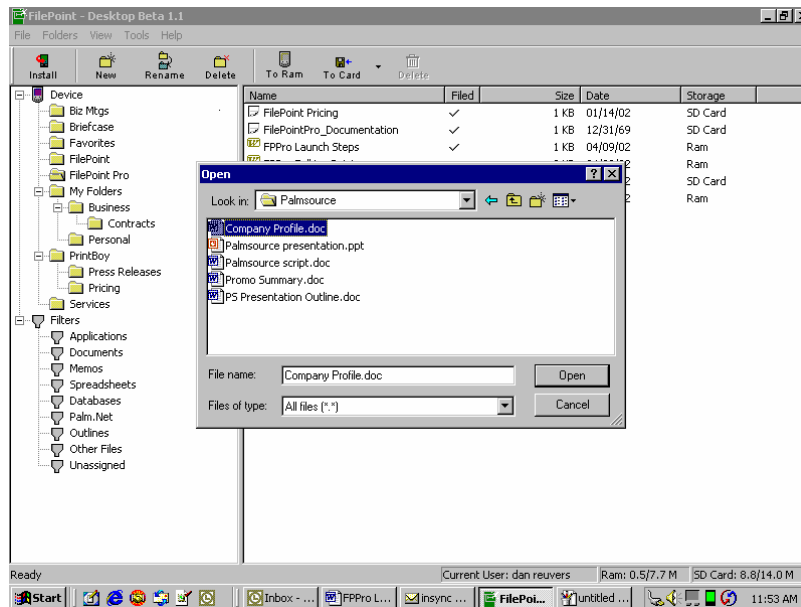
Bachmann Utilities includes our most full functioned printing software and our powerful file organizer FilePoint Pro.

What Is FilePoint Pro?

FilePoint Pro is a utility suite that provides mobile users with all the tools they need to manage their data; no matter where it is.

Desktop Utility:

- **Display and manipulate your entire PDA folder structure on your PC**
- **Move files to folders on your PDA/card with drag & drop convenience**
- **Install files and applications directly to an assigned destination on your PDA**
- **Store any file to your expansion card for easy transport (music, photos, etc.)**



PDA Utility:

- **Collapsible Folder Tree organization system for files**
- **User-friendly toolbar that includes: Open, Print, Beam, Delete, Move, New Document**
- **Drag & Drop for fast movement of files**
- **Filters for fast retrieval, including “last 10 documents opened”**

Expansion Card Utility:

- **View files on card from PDA or Desktop PC**
- **Move files to and from card with click of mouse or tap of stylus**
- **Save data directly to a folder on the card**

- **Memory management data** (capacity information available on PC or PDA)
- **Compatible w/SD, MMC, CF, Memory Stick, and MemPlug expansion cards**

1.9. How Do I Stay Updated on the Latest PrintBoy Enhancements!

We plan on enhancing our Printing capability often. It is important that you register at <http://www.bachmannsoftware.com/pbpremregister> so we can update you on the latest printing capabilities from new applications, as well as new printer drivers and other features.

2.0 Getting Started with PrintBoy

2.1 Pre-Installation Checklist:

If you have a Palm Pilot, Handspring Visor, Sony Clie, TRGPro, IBM Workpad, Symbol SPT product or any other PDA that uses the **Palm OS operating system version 3.0 or higher**, you can use PrintBoy.

To install and use PrintBoy you need the following:

- A Palm Pilot or compatible using Palm OS 3.0 or above
- A Personal Computer, Hotsync cradle and any unzip software (for example, WinZip or Pkzip)– to download PrintBoy onto your PDA

To print using an **Infrared** connection you will need:

- A Printer with any of the following:
 - A built-in infrared (IR) port on your printer
 - A Bachmann InfraReady adapter (purchasable online at <http://www.bachmannsoftware.com>)
 - An IRDA printer adapter from Actisys, model number ACT-IR100M. You can purchase on-line at <http://www.bachmannsoftware.com>.
 - An IRDA Printer adapter from Extended Systems – You can purchase on-line at www.extendsys.com. Extended Systems product number is ESI-9580C

To print using a **Bluetooth** connection you will need:

- A Palm OS handheld with bluetooth support (present in most handhelds running Palm OS 4.0 or later)
- A Palm-compatible bluetooth card or radio (such as the Palm Bluetooth SD card)
- A Printer with one of the following:
 - A built-in Bluetooth port on your printer
 - A Bachmann BTReady adapter (purchasable online at <http://www.bachmannsoftware.com>)
 - Other add-on Bluetooth print adapter

To print using a **Network** connection you will need:

- A Palm OS handheld that can make a successful network connection to the network that the printer is attached to. A Palm OS handheld can connect to a network in any number of ways, such as the following:
 - A Palm 56k modem connected to a phone jack using Dialup Networking
 - A PDA-phone such as the Handspring Treo, Samsung I300 or Kyocera Smartphone, connected to your network through a wireless cellular connection
 - A “Wi-Fi” or 802.11 connection through an adapter such as the Intel Wireless LAN Adapter or Symbol’s Wireless Networker
 - An IR-LAN connection such as Clarinet’s EthIR product.
 - A Bluetooth enabled Palm such as the Tungsten T, or a Palm OS 4.0 device with an add-on Bluetooth SDIO card, connected to a Bluetooth Access Point
 - An Ethernet cradle, such as the Portsmouth cradle
- A printer that is attached to the network and which has its own IP address. Most modern laser printers either come with an Ethernet port or can be inexpensively augmented with an add-on Ethernet module or Ethernet-capable Print Server appliance such as the HP JetDirect appliance.

Important! How you connect to your networked printer is dependent on the hardware being used, and the configuration of both your Palm and the network hosting the printer. To configure your Palm to connect to your networked printer, please be sure to consult the documentation that came with your handheld adapter hardware, your printer, and also please be sure to consult with your network administrator.

To print using a **Serial Cable** connection you will need either:

- A serial to parallel cable – Greenwich Instruments – GA945PP – This allows you to print at speeds up to 57.6K BPS. You can purchase on-line from www.igo.com - Igo's product number is 31696. (This product only works with Palm devices that use the original serial connection, for example Palm III and Palm VI.)
- A serial cradle (either the Handspring or Palm) and the Greenwich Instruments cable GA935CE9M – This allows you to print at 9600BPS. You learn more about this product from www.greenwichinst.com.

2.2 Installing PrintBoy:

PrintBoy is easy to install. Choose your personal computer operating system below and follow the instructions:

Microsoft Windows

Step 1: If your version of PrintBoy is a Zip file (such as PrintBoyPrem.zip), unzip the enclosed file PrintBoySetup.Exe using a Zip compatible program such as WinZip. Most computers have a Zip utility already on them, but you can obtain a copy of WinZip at <http://www.winzip.com>. If your version of PrintBoy did not come in Zip format, simply copy the installation file (PrintBoySetup.exe) into a folder of your choice.

Step 2: Run the Setup program (PrintBoySetup.exe) from this folder

Step 3: Follow the step by step instructions on your computer screen from the PrintBoy installation program. This simple process will queue all the necessary PrintBoy files to be automatically added to your Palm device during the next HotSync operation.

Step 4: Perform a HotSync. This will copy all the necessary files onto your Palm.

Macintosh

Step 1: Extract the PrintBoy program components from the PrintBoy.SIT file

Step 2: Locate the folder where you extracted the program files and documentation.

Step 3: Add the following files to the Palm Install Tool:

- PBAddress.prc
- PBMemo.prc
- PBMail.prc
- PBDate.prc
- PBDB.prc
- PBGDBDr.prc
- PBToDo.prc
- PBClip.prc
- PBDoc.prc
- PBSpread.prc
- PBSToGoDr.prc
- PBQsDr.prc
- PBPres.prc
- PBPStgDr.prc
- PBQPpDr.prc

- PBShell.prc
- PBDiscovery.prc
- PrintMgr.prc
- PageMgr.prc
- IrMgr.prc
- BPMConfig.prc
- BSSFontDB.pdb

You will also need to add any printer drivers you will need (all printer drivers begin with the prefix “BPM”, for example BPMCanon.prc)

Step 4: Perform a HotSync. This will copy all the necessary files onto your Palm.

That’s it! PrintBoy and the PrintBoy run time engine are now installed on your Palm. If you tap on the Applications icon, Main icon or Unfiled icon, you should see the PrintBoy Shell application in the Launcher on your main Palm screen, as shown below:

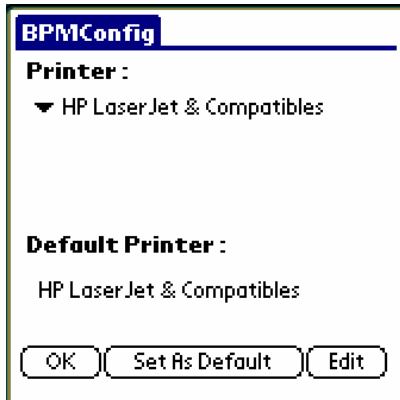


3. Configuring Your Printer

Once PrintBoy has been successfully installed, you need to choose your default printer. PrintBoy comes with a Print Setup application that runs on the Palm.

Print Setup (shown below) allows you to:

1. Choose your default printer
2. Configure your printer's communications, default paper size, margins, and other settings



3.1. Choosing Your Default Printer

Choosing your default printer saves you time, so that you won't have to setup your printer every time you want to print. PrintBoy allows you to choose a default printer that it will automatically use for each print job.

Perform the following steps to select your default printer.

- Run PrintBoy from your Palm application launcher
- Tap on the "Setup" button, located at the bottom right corner of the main PrintBoy screen
- Tap on the "Driver Name" drop-down list to see a list of all available printer drivers (see "Choosing a Printer Driver" below)
- Tap on the driver that most closely describes your printer
- Tap on the "Set as Default" button to set that driver as the default one to use with PrintBoy

Note that you can change your driver selection at any time by simply tapping on Setup from the main PrintBoy screen.

3.2. Choosing a Printer Driver

Because PrintBoy is powered by the PrintBoy Run Time Print Engine, you can print from your Palm to almost any desktop, networked or mobile printer. PrintBoy comes with many special print drivers to help your Palm create the best output possible for your printer.



All of the PrintBoy plug-in applets will work with any of the printer drivers, so you will be able to print the same information no matter which printer you have. However, some printer drivers have been enhanced to support fully graphical output, enabling PrintBoy to render rich formatted pages.

To help you select the best driver for your printer, you should consult the Appendix A: Printer Compatibility Matrix, located at the end of this manual. Find your printer in the list, and note the recommended Bachmann Print Manager driver.

- **Important! Which printer you own, and which printer driver you select, will determine how well PrintBoy works. It will also determine whether PrintBoy gives you fully graphical output or plain text output. (See Appendix A)**

You should also consult the user guide that came with your printer and see if it talks about compatibility with other printers. For example, a great many printers support (or “emulate”) Hewlett-Packard’s “Printer Control Language” (also known as PCL). If this is the case, you can try to use either the LaserJet or the DeskJet driver.

If your printer is not listed in the Compatibility Matrix, and your printer manual does not describe any emulation for a printer that is in the Matrix, you will almost certainly be able to achieve basic printing by choosing the “Generic” printer driver.

What are TruePage Printer Drivers?

PrintBoy drivers come in two main families: Standard drivers and TruePage drivers.

Standard drivers rely on the target printer to supply the necessary resident fonts for rendering your printed output. Using these drivers results in the fastest printed output, but on occasion your print job will ask the printer to print using a font that it does not have. In those cases, it is up to the printer to make a reasonable substitution. In most cases this is not a problem, but if your document requires a specific point size of Times New Roman that is not resident on the printer, your printed document will likely substitute a smaller size

TruePage drivers supply their own printer-friendly fonts, which must be installed on your Palm device. PrintBoy comes with TruePage printer-friendly fonts in Times New Roman and Courier styles, at various point sizes. Depending on what you are printing, using TruePage drivers can result in a printed page that is more “true” to the original font selections, format and layout. Because the burden of rendering a more exact page layout falls on the Palm handheld vs. the printer, TruePage printing can be somewhat slower in printing performance, especially on older Palm handhelds. With more powerful Palm handhelds and faster connections over Bluetooth and Wi-Fi/802.11, this speed difference is becoming much smaller. Besides

Times New Roman and Courier, additional TruePage compatible font styles will be available for download by registered users on our web site.

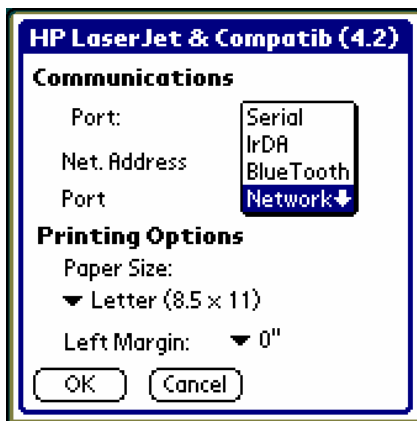
You can tell if a printer driver supports TruePage or not by looking at the driver name in the Print Setup utility. The driver name will have “TruePage” in it (ex. Canon TruePage, or HP TruePage).

3.3. Verifying Printer Settings

The PrintBoy printer drivers come pre-configured with the most likely communications settings. Depending on your driver and your intended printing connectivity (infrared or serial), you may need to adjust these settings. Also, you may associate a specific printer driver with a special paper size and margin setting.

The Print Setup application makes changing these settings easy and consistent for all printer drivers. Just follow these steps:

- Run PrintBoy from your Palm application launcher
- Tap on the “Setup” button, located at the bottom right corner of the main PrintBoy screen
- If your driver is not already displayed, tap on the “Driver Name” drop-down list to see a list of all available printer drivers (see “Choosing a Printer Driver” above), and tap on the driver you wish to configure.
- Tap on the “Edit” button



From the Driver Edit screen (shown above) you may adjust communications, paper size, and margin settings.

Communications (Speed, Port, Flow Control)

- Set the communications speed to meet your printer’s specifications. The defaults provided should work fine with most printers, but if you run into difficulties communicating with the printer you may need to change the speed. See Appendix A “Printer Compatibility” for details.
- Set the technology to “Serial”, “IrDA”, “BlueTooth” or “Network”.
- Tap OK

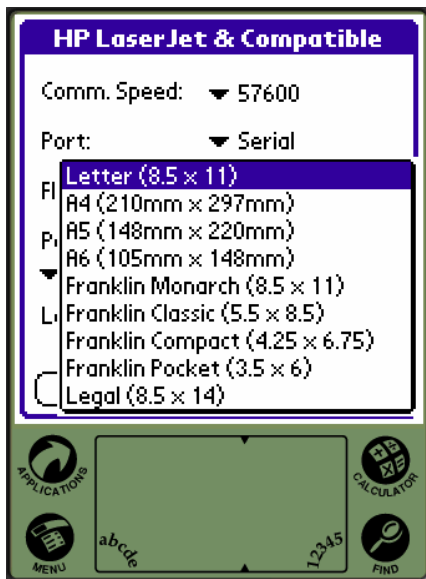
Depending on which communications technology you have chosen, you may see different options appear:

- If you are using the Greenwich Instrument serial cable – GA945PP, you would need to set the Flow Control to “none”.

- If you are using Network printing, you will need to do either one of the following:
 - Enter the IP address associated with your printer, as well as the Port number that your printer is using on the network. For example, in the IP Address field you might enter “129.100.0.2” with a port number of “9100”. Consult with your Network Administrator for the correct settings.
 - Register your printer at <http://www.print-boy.com>, and use the PrintBoy Discovery feature to automatically configure your Networked printer in PrintBoy. For more information on using PrintBoy Discovery and PrintBoy Server at <http://www.print-boy.com>, read the file “Network Printing with PrintBoy – User Documentation.pdf” that came with your PrintBoy installation, or visit <http://www.print-boy.com>.

Paper Size

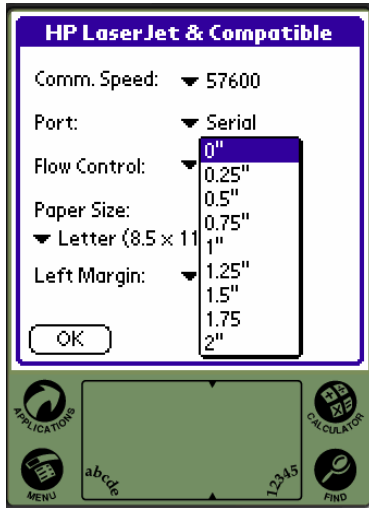
You can choose a default paper size from a list of supported sizes below:



Note that after selecting a paper size, PrintBoy will automatically format for that paper size in any output it produces.

Left Margin

The most common left margin settings are available in a drop down list, beginning at 0" on up to 2" in 0.25" increments.



When you are done configuring your print driver settings, you may tap OK at the Print Setup screen to return to PrintBoy's main screen.

4. Removing PrintBoy

If for some reason you wish to remove PrintBoy from your Palm device, you will need to perform the following steps:

Step 1: Tap on the Applications icon, then tap on the Menu icon and choose App | Delete.

Step 2: Find each of the following files and delete them from your Palm:

- PBAddress.prc
- PBMemo.prc
- PBMail.prc
- PBDate.prc
- PBToDo.prc
- PBClip.prc
- PBDB.prc
- PBGDBDr.prc
- PBDoc.prc
- PBSpread.prc
- PBSToGoDr.prc
- PBQsDr.prc
- PBPres.prc
- PBPStgDr.prc
- PBQPpDr.prc
- PBShell.prc
- PBDiscovery.prc
- PBSendEx.prc
- PBSendLaunch.prc

- PrintMgr.prc
- PageMgr.prc
- IrMgr.prc
- BPMConfig.prc
- BSSFontDB.pdb

You may also wish to remove any installed printer drivers and fonts:

At this point, PrintBoy is no longer on your Palm device. You can reinstall it by simply re-running the installation procedure (see section 2).

5. Printing from PrintBoy

This section describes the PrintBoy shell application, as well as the individual PrintBoy plug-in applications.

5.1. The PrintBoy Shell Application

The PrintBoy Shell application (shown below) is a “launcher” for the various PrintBoy plug-ins, as well as for the Bachmann Print Setup program.



The PrintBoy “Shell”

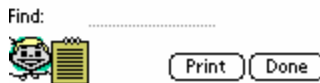
The main screen consists of:

- A list of installed PrintBoy Plug-Ins
- A Setup button for launching the Print Setup utility

Each Plug-In listed on the main screen represents a kind of information you can print. Tapping on the description for a plug-in will launch the plug-in applet. For example, tapping on the Appointments description will launch PrintBoy:DateBook, which lets you print your DateBook appointments in a variety of formats.

5.2. PrintBoy/Address

PrintBoy/Address (shown below) is launched by tapping on Addresses from the main PrintBoy screen. PrintBoy/Address lets you print any address from your Palm's Address List.



The PrintBoy/Address screen lists all of your Palm addresses by category, just like the built-in Address List application. Use the category dropdown list in the upper right corner of the screen, along with the vertical scrolling feature, to locate the address you wish to print. As an alternative, you can use the Find feature to jump to the address by entering the first few letters in Graffiti.

Once you've found the address, simply tap on it to select it, then tap the Print button.

Note that PrintBoy will also work with **any** 3rd party Address List enhancement such as Action Names or Address Pro, since those applications continue to use the standard Palm Address database.

5.3. PrintBoy/DateBook

PrintBoy/DateBook (shown below) is launched by tapping on Appointments from the main PrintBoy screen. PrintBoy/DateBook lets you view your scheduled appointments and events for a single day, multiple days, a week at a time, or in the familiar “month at a glance” monthly calendar format.



The PrintBoy/DateBook screen lets you choose from four buttons that control how your appointments will be printed out.

“Date”: Lets you choose a single date (the default is “today”) for which to print your appointments.

“Range”: Lets you choose a start date and end date. Your appointments are printed for each day in the range

“Week” Lets you choose a week (the default is the current week) for which to print your appointments. Your appointments are printed for each day in the week.

“Month” Lets you choose a month (the default is the current month) for which to print your appointments.

Note: If your configured print driver supports enhanced graphics, (currently supported for the HP LaserJet and Compatibles, HP DeskJet and Compatibles, O’Neil Microflash, as well as the Pentax PocketJet 200), PrintBoy will print a graphical “Month at a glance” month calendar. If your configured print driver does not support enhanced graphics, your appointments will be printed as a range of days, just the same as if you had chosen “Range” or “Week”.

After you have completed a printout, you may continue to choose more printouts. Tapping the Done button returns you to the PrintBoy Shell.

Note that PrintBoy will also work with **any** 3rd party Datebook enhancement such as DateBk4, since those applications continue to use the standard Palm DateBook database.

5.4. PrintBoy/To Do

PrintBoy/To Do, (shown below) is launched by tapping “To Do’s” from the PrintBoy Shell. PrintBoy/To Do lets you print your To Do’s from the built in Palm To Do List. PrintBoy will automatically sort your printout by priority and due date, and even include a handy “check box” in the left hand column so you can check tasks as completed as you work through your day.



You can choose how to print your to do's by selecting a category from the top right corner of the screen. These are the same categories found in the Palm To Do list application. If you select the “All” category, all of your to do's will be printed. Selecting a different category will print only to do's that have been stored in that category.

When you have selected your category, simply tap the Print button. Your To Do's are printed sorted by ascending priority, and descending due date within each priority. If a To Do has an associated Note, the note is automatically printed along with the To Do.

You may print several categories in succession if you choose. When you are done printing, tap the Done button to return to the PrintBoy shell.

5.5. PrintBoy/Memo

PrintBoy/Memo, (shown below) is launched by tapping “Memos” from the PrintBoy Shell. PrintBoy/Memo lets you print any single Memo stored by the built in Palm Memo application. Use PrintBoy/Memo to print meeting notes, driving directions, important ideas, shopping lists and more!



The PrintBoy/Memo screen lists all of your Palm memos by category, just like the built-in Memo application. Use the category dropdown list in the upper right corner of the screen, along with the vertical scrolling feature, to locate the memo you wish to print.

Once you’ve found the memo, simply tap on it to select it, then tap the Print button.

You can print several memos in succession if you choose. Simply tap the Done button to return to the PrintBoy shell.

5.6. PrintBoy/Mail

PrintBoy/Mail lets you print any e-mail created by the built in Palm Mail application. Use PrintBoy/Mail to print drafts, incoming mail, or sent mail.



Select the mail you wish to print by first choosing the folder, then scrolling down the list and tapping on the e-mail to be printed. Tap on the “Print” button to print the mail.

5.7. PrintBoy/Clipboard

PrintBoy/Clipboard may appear simple, but in fact is the most versatile of all the PrintBoy plug-ins. It can print information from any Palm application that supports copying data to the standard Palm Clipboard. This includes web browsers, e-mail software, document readers, databases, and more. For example, on the

Palm VII™ Organizer, you can copy wireless web clippings from the Internet to the clipboard, switch to PrintBoy Clipboard, and print out your web page in a matter of seconds.

The Clipboard is a kind of temporary space where information may be exchanged between applications. For example, you can copy part of a memo and paste it into another new memo. Or you can copy an address book entry into a memo. Not only that, but most 3rd party applications also support the clipboard, meaning that you can copy web content, e-mail, documents, expense data, and more to the Palm clipboard.

PrintBoy can take any text that is copied to the clipboard, and print it out just like a memo.

PrintBoy/Clipboard is different than the other PrintBoy applets in that you should first run your target application, and copy your target data to the Palm clipboard. Then run PrintBoy/Clipboard from the PrintBoy shell by tapping on the “clipboard” item.

Tap on the “Print” button, and your information will be printed.

5.8. PrintBoy/Documents

PrintBoy Documents is a Palm software application that enables you to print documents that you have stored on your Palm™ Organizer directly to your printer through either an infrared or serial connection.

This PrintBoy version is compatible with the following Document programs for the Palm:

- Documents To Go™ by DataViz
- Wordsmith™ by Blue Nomad
- Quickword™ by Mobility Electronics (formerly Cutting Edge Software)
- MiniWrite™ by Solutions In Hand
- The Doc format has become a standard for storage of text-based content on Palm devices. Various vendors, all of which support the Doc format, have released a large number of converters, editors and readers.

PrintBoy Documents is the first standalone commercial software product that allows Palm users to print their documents directly from their handheld devices to virtually any printer. When combined with a capable Converter program, PrintBoy Documents supports printing of Text, HTML, Word, RTF, and PDF files stored on the Palm.

PrintBoy Documents leverages the power of our industry-standard Bachmann PrintBoy Run Time Engine to create lightning-fast, formatted output against almost any printer. Simply point your Palm at your printer's infrared port (serial port connectivity is also supported), load the PrintBoy for Documents plug-in of your choice, and tap "print" – your information will be perfectly formatted and immediately printed on readable, full-size paper.

PrintBoy Documents does not use a personal computer to print. Instead, PrintBoy Documents comes with special print drivers that enable your Palm™ compatible handheld device to print **directly** to virtually any printer.

PrintBoy for Documents installs and runs as a completely separate Palm program from whatever doc readers are in use by the customer. It is not dependent at all on the presence of a Doc reader or editor, and in fact will work with any Doc converter that conforms to the Doc standard format.

PrintBoy for Documents plugs into the standard PrintBoy "shell" so that if a customer owns other PrintBoy plug-ins they will all appear in the same list of plug-ins.

To print a document, the user runs PrintBoy, and taps on the Documents plug-in to launch PrintBoy for Documents. If the user has any files that are in Doc format, they are listed on the screen. The user selects the Doc file they wish to print, establishes connectivity to the printer, and then taps the Print button. The document is then printed.

How to Print

The main screen of PrintBoy Documents consists of

- A multi-column display panel known as the **File List**
- A set of printing options
- Several command buttons.

The File List

The File List presents a list of documents that you have stored on your Palm device. If no documents are found, the list is empty.

The columns in the File List show you your document Name, Date, Size and Type. The Name column lists what your document was named when it was converted by the program that transferred it to your Palm device (see Converters). The Date column lists the date stamp for the document when it was stored on your Palm device, or the last updated date if you are using a Doc Editor program. The Size column indicates the size of your document in bytes (rounded down to the nearest 1K bytes). The Type column indicates whether your document is stored in the standard Doc format or is stored in the enhanced Wordsmith format.

By default the list is sorted alphabetically by Name. Tapping on any of the three column labels “Name”, “Date” or “Size” sorts the File List by that column in ascending order.

If more Doc files are available than can be displayed at one time, an up arrow and down arrow appear at the bottom right of the list. Tapping on these arrows causes the list to scroll by one page in either direction.

Printing Options

You can choose two settings that affect the printed output for any printer driver: Page Header and Page Numbers. These settings are not persistent from across print jobs and thus need to be set for every job.

- Page Header

If the checkbox for Page Header is set, a header will appear at the top of every page. The header should contain the File Name for the document as well as today’s date, formatted using the Palm’s long date format preference. If the checkbox is not set, there should be no header printed.

- Page Numbers

If the checkbox for Page Numbers is set, an incremented page number will be printed at the bottom of every page. If the checkbox is not set, there should be no page number printed.

Command Buttons

Two command buttons appear at the bottom of the Documents screen: Print and Done. Tapping on Print will print the currently selected document from the File List. Tapping Done will return you to the main PrintBoy shell program.

Printing a Document

Printing is performed by tapping on a document to select it, then tapping the Print button. If the user has not selected a document, a message “Please select a document to print” will appear.

While printing, a progress interface will appear that counts the number of pages sent to the printer. When all pages are sent successfully the progress interface closes.

PrintBoy Documents will attempt to print against any printer driver that is chosen by the user in the Print Setup utility. The format and quality of the printed output will vary based on the PrintBoy printer driver

chosen. Some of the most popular PrintBoy drivers, including HP Laserjet and Deskjet drivers and the Ricoh driver, are capable of rich graphical output and will print a graphical banner across the top of the page. Other printers will at minimum output the document using plain text.

PrintBoy Documents printout will always contain **the entire document** no matter how long (there are currently no set limits in PrintBoy for the maximum document length). Note that for Doc readers that support the clipboard, customers can select a small section of text, copy it to the clipboard, then use PrintBoy Clipboard to print it.

5.9. PrintBoy Spreadsheet

PrintBoy Spreadsheet is a Palm software application that enables you to print spreadsheets that you have created and stored on your Palm™ Organizer. This version of PrintBoy prints spreadsheets produced in the following applications:

- Sheet To Go™ by Dataviz.
- QuickSheet™ program from Mobility Electronics (formerly Cutting Edge Software)
- MiniCalc™ from Solutions In Hand

PrintBoy Spreadsheet lets you print these spreadsheet files directly to your printer through an infrared, Bluetooth, networked or serial connection, in a format that is very similar to what you would expect if you printed a spreadsheet from your PC.

PrintBoy Spreadsheet is in fact the first standalone commercial software product that allows Palm users to print their spreadsheets directly from their handheld devices to virtually any printer.

PrintBoy Spreadsheet works with any spreadsheet produced within the Documents to Go application. Depending on the print driver you select, formatting includes labeled headings, portrait/landscape layout, grid lines, and print to fit cells.

PrintBoy Spreadsheet leverages the power of our industry-standard Bachmann Print Manager to create lightning-fast, formatted output against almost any printer. Simply point your Palm at your printer's infrared port (serial port connectivity is also supported), load the PrintBoy Spreadsheet plug-in of your choice, and tap "print" – your information will be perfectly formatted and immediately printed on readable, full-size paper.

PrintBoy Spreadsheet does not use a personal computer to print. Instead, PrintBoy Spreadsheet comes with special print drivers that enable your Palm™ compatible handheld device to print **directly** to virtually any printer.

Like the other printing applications in the PrintBoy family, PrintBoy Spreadsheet into the standard PrintBoy "shell" so that if a customer owns other PrintBoy plug-ins they will all appear in the same list of plug-ins.

To print a spreadsheet, the user runs PrintBoy, and taps on the Spreadsheets plug-in to launch PrintBoy Spreadsheet. If the user has any files stored in Quicksheet format, they are listed on the screen. The user selects the spreadsheet they wish to print, establishes connectivity to the printer, and then taps the Print button. The spreadsheet is then printed.

How To Print

The main screen of PrintBoy Spreadsheet consists of

- A 3-column display panel known as the **File List**
- A set of printing options
- Several command buttons.

The File List

The File List presents a list of Sheet to Go spreadsheets that you have stored on your Palm device. If no spreadsheets are found that match your spreadsheet application, the list is empty.

There are three columns in the File List: Name, Date and Size. The Name column lists what your spreadsheet was named when it was converted by the program that transferred it to your Palm device. The

Date column lists the date stamp for the spreadsheet when it was stored on your Palm device, or the last updated date. The Size column indicates the size of your spreadsheet in bytes (rounded down to the nearest 1K bytes).

By default the list is sorted alphabetically by Name. Tapping on any of the three column labels “Name”, “Date” or “Size” sorts the File List by that column in ascending order.

If more Spreadsheet files are available than can be displayed at one time, an up arrow and down arrow appear at the bottom right of the list. Tapping on these arrows causes the list to scroll by one page in either direction.

To select a spreadsheet file for printing, tap once on the file, then tap the “Select” button.

Printing Options

- Sheet To Print

Choose the sheet(s) within your spreadsheet workbook that you wish to print. You can choose as many as you would like by tapping on the square checkbox in the left-most column. You can quickly select all sheets or none by using the “Check All” or “Clear All” buttons on the right.

If there are more sheets than can be seen on a single screen, the scroll arrows on the right will scroll through the sheets.

- Draw Grid

Allows you to turn grid line printing on or off. This setting is off by default.

- Landscape

When checked, prints the spreadsheet in landscape orientation. The default is portrait orientation.

Command Buttons

Two command buttons appear at the bottom of the Spreadsheets screen: Print and Done. Tapping on Print will print the currently selected spreadsheet according to the Print Options specified. Tapping Done will return you to the main PrintBoy shell program.

Printing a Spreadsheet

Printing is performed by tapping on a spreadsheet to select it, then tapping the Select button. If the user has not selected a file, a message “Please select a file to print” will appear. At the next screen, tap Print.

While printing, a progress interface will appear that counts the number of cells read and sent to the printer. When all pages are sent successfully the progress interface closes.

PrintBoy Spreadsheet will attempt to print against any printer driver that is chosen by the user in the Print Setup utility. The format and quality of the printed output will vary based on the PrintBoy printer driver chosen. Some of the most popular Print Boy drivers, including HP Laserjet, Deskjet driver, HP TruePage, Canon TruePage, Postscript driver and the Ricoh driver, are capable of rich graphical output and will print a graphical banner across the top of the page. Other printers will at minimum output the document using plain text. In all cases, the printed output will be column aligned, just as you would expect from a spreadsheet printout.

Important: PrintBoy Spreadsheet will print the **last saved** version of your spreadsheet. If you've made recent changes in your spreadsheet, please make sure you have saved the file before attempting to print it, or your recent changes will not be printed.

5.10. PrintBoy Presentation

PrintBoy Presentation allows you to print PowerPoint presentations directly from your Palm handheld to your printer. This version of PrintBoy is compatible with:

This version of PrintBoy includes printing presentations from:

- Slideshow To Go™ by DataViz
- QuickPoint™ from Mobility Electronics (formerly Cutting Edge Software)

The current version of PrintBoy allows you to print your presentation either as individual slides, multiple slides, or the entire presentation. Which slides you print is controlled by the Print Options form which appears after selecting a presentation.

You have the option of printing your presentation in “Outline” mode, or in “Notes” mode. Depending on what your needs are, either mode or both modes may be important to you. At present, PrintBoy does not support printing the actual slide images, that feature will be included in an upcoming release of the software.

5.11. PrintBoy Database

PrintBoy Database is different than other PrintBoy applets you may be familiar with, in that PrintBoy Database is run directly from your database program such as SmartLists To Go or HanDBase in order to allow you to print your current data. You do not run PrintBoy Database and choose a database from within PrintBoy – rather, you run your database program, choose your data, and print.

Printing from SmartLists To Go (formerly thinkDB)

SmartLists To Go offers two ways to output information from your database: Printing and Exporting. Printing, of course, provides you with a hard copy of your data on paper. You can print lists or individual records directly from your PDA if you have installed PrintBoy.

You can generate data from an entire database based on the View screen layout or from individual records based on the Record screen layout. When printing a database, you can the base data layout on any existing view, or customize a special view.

The screen capture images in this section display the Memo Pad results of an Exporting operation, but the layout in these images is exactly what you will see when you print, as well. The following sections walk you through how to use the various printing options from within SmartLists To Go:

Printing and Exporting Databases

To print or export a database, begin from the List View screen and follow these steps:

1. If you wish to base the layout of the data on an existing View design, select that view before you continue.
2. Open the List View Screen Menu and select **Tools > Print/Export** or use shortcut /W. This will open the Print/Export screen.
3. Select the View Format you wish to use for the operation, either List View or Detail. If you want to base the layout on the View design you selected just before opening the Print/Export screen, select

List View. If you wish to customize a view especially for this operation, select **Detail**.

This will create a Layout... button just below the Detail option. To customize your layout, click on the **Layout...** button to open the Print/Export Layout screen.

4. In the Print/Export Layout screen, you will design the layout by arranging the field you want to print or export in the Output Fields area in the order you want them to appear. To do this, use the following controls. Note that each field can appear only once in the Output Fields area.

Add field - Use this pull-down menu to add fields to the Output Fields area. Open the pull-down menu and select a field name to add it.

Remove - Use the button to remove files from the output. Select the field you wish to remove in the Output Fields area and click the Remove button to delete it.

Clear all - Use this button to remove all the fields from the Output Fields area at once.

Add all - Use this button to add all the fields to the Output Fields area at once.

5. When you have completed your output design, click **OK** apply your design and to return to the Print/Export screen, or click **Cancel** to return to the Print/Export screen without applying your changes.

6. Select which export procedure you wish to perform. Click **Start Printing** to output your database to the printer. To export the data to Memo Pad, you will click on the **Export to memo** button, but first, use the pull-down menu below the button to select how you want the data separated.

Select **Fixed width** to produce a layout that shows the field names and information separated by a varying number of spaces so that each line has the same total number of characters.

Select **Tab delimited** to produce a layout that shows the field names and information separated by a tab.

7. When the output process is complete, a small window will open stating that the export was successful. Click **OK** to close the Print/Export screen and return to the List View screen.

The printing procedure is now complete

Printing and Exporting Records

To print or export a record, begin from the Record screen and follow these steps:

1. Open the Record Screen Menu and select **Actions > Print/Export Layout**. This will open the Print/Export screen.
2. Configure the layout of the record output in this screen exactly as described in step 4 of the section on printing databases, above.
3. Click **OK** to accept these changes to the layout and close the Print/Export Layout screen, or click **Cancel** to close the Print/Export Layout screen without instituting your changes. The Record is not yet printed or exported.

4. Open the Record Screen Menu and select the appropriate command from the Actions menu. If you wish to print the record, select **Actions > Print Record**. If you wish to Export the record to Memo Pad, select **Actions > Export Record**.

Unlike printing a or exporting a database, this will output only the record that is currently open.

5. When the record is exported or printed, a small window will open to indicate that the output was successful. Click **OK** to return to the Record screen.

6. Registering and Technical Support

6.1. Registering Your Software

Please register your software at

<http://www.bachmannsoftware.com/pbpremregister>.

Registered users are entitled to:

- Free Technical support
- The latest version of PrintBoy, including updates and new features
- Additional and Updated Printer Drivers and Fonts
- FREE additional printing software:
 - **PrintBoy/Outline** printing from ThoughtManager
 - **PrintBoy/Note** -In the middle of a meeting and want to take a note and give non-Palm™ users a copy? PrintBoy/Note lets you take a text only note using Grafitti™ or the Palm™ keyboard and print or save the note until you need to create another.
 - **PrintBoy/Scribble**-Had a great thought that you just don't want to forget? Need to jot a quick phone number or address as you finish up a call in your car? PrintBoy/Scribble lets you jot it down and print or save the note until you need to create another.

6.2. Obtaining Technical Support

If you have a question that is not answered in this manual, or you are experiencing a problem using the software, please visit our online Support area at www.bachmannsoftware.com.

On our support page you will find information on how to subscribe to our active PrintBoy user group, as well as answers to Frequently Asked Questions (FAQ's). If these information sources do not provide the information you need, please e-mail your support question to support@bachmannsoftware.com. We make every effort to reply to support questions within one business day.

When e-mail us for technical support, we appreciate it if you provide us with the following information:

- Your printer manufacturer and model number
- The default printer driver you are using
- Communications settings (IR or serial, speed, etc)
- Which PrintBoy applet you are using
- What version of the PrintBoy applet you are using (Mention – PrintBoy Premium edition)
- A detailed description of the problem

We thank you for your help and patience!

7. Integration with Other Palm Applications: Launching PrintBoy from other Palm Applications

The PrintBoy Documents, Spreadsheet, Presentation, Outline, and Database plug-ins supports a special Palm launch code that allows them to be run from another application in order to print a single document or spreadsheet. Any third party applications, such as Document readers and Editors, Spreadsheets, Databases, and even custom applications can easily add document, spreadsheet and database printing by adding a single line of code! For more information on this interface, including sample code, please contact Bachmann Software support at (973) 729 9427 or e-mail support@bachmannsoftware.com.

Appendix A: Printer Compatibility Matrix

Use the following matrix to determine the best Bachmann PrintBoy driver to use with your printer.

Important: We are adding new and updated drivers all the time! Please visit our web site frequently to check for updated printer compatibility!

Note that IR printing speeds are determined by the following:

- 1) The target printer: the correct speed is described in your printer manual's "Specifications" section.
- 2) The serial cable being used: Serial printing speeds are generally determined by your serial cable. The Greenwich Instruments cable is rated for 57600.
- 3) The infrared adapter being used. If the printer has built-in IrDA support, the correct speed is again found in your printer manual. If an add-on IR adapter (such as Bachmann's InfraReady adapter, or the Actisys 100M) is used, consult the user manual for the infrared adapter.

Manufacturer	Model	PrintBoy Output	Print Driver
HP	All LaserJet models as well as compatibles running PCL3 or greater.	Full Graphics	HP LaserJet and compatibles
HP	All HP DeskJet's running PCL 3, including DeskJet 340, DeskJet 350, 890, 895, all newer models and other DeskJet compatibles running PCL3	Full Graphics	HP DeskJet and compatibles
Canon	All	Formatted Text	Canon
Canon	BJC-50, 55, 80, 85	Full Graphics	Canon Advanced
Ricoh	All models	Full Graphics	Ricoh
Seiko	DPU 3445	Formatted Text	Seiko
Citizen	PN-60I	Formatted Text	Generic
O'Neil	Microflash series	Full Graphics	Oneil
Paxar/Monarch	6015	Formatted Text	Generic
Epson	All models	Formatted Text	Epson driver
Lexmark		Formatted Text/Full Graphics	Lexmark, HP DeskJet, or HP LaserJet
Zebra	Cameo, Encore or PA/PT models	Formatted Text	Zebra Cameo, Zebra Encore, Zebra PAPT

Extech	3500T, MSTIV	Formatted Text	Extech 3500T, Extech MSTIV
--------	--------------	-------------------	----------------------------

