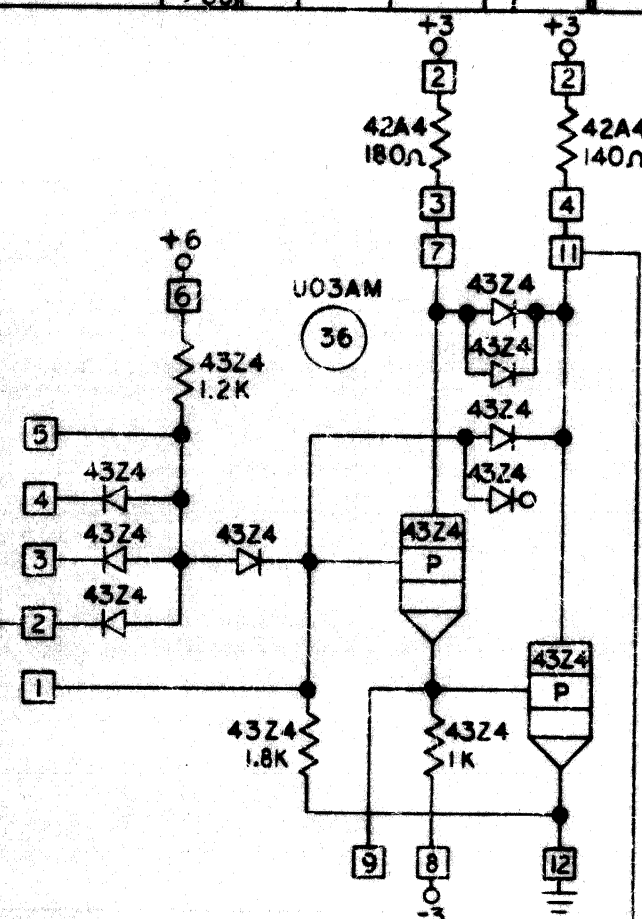
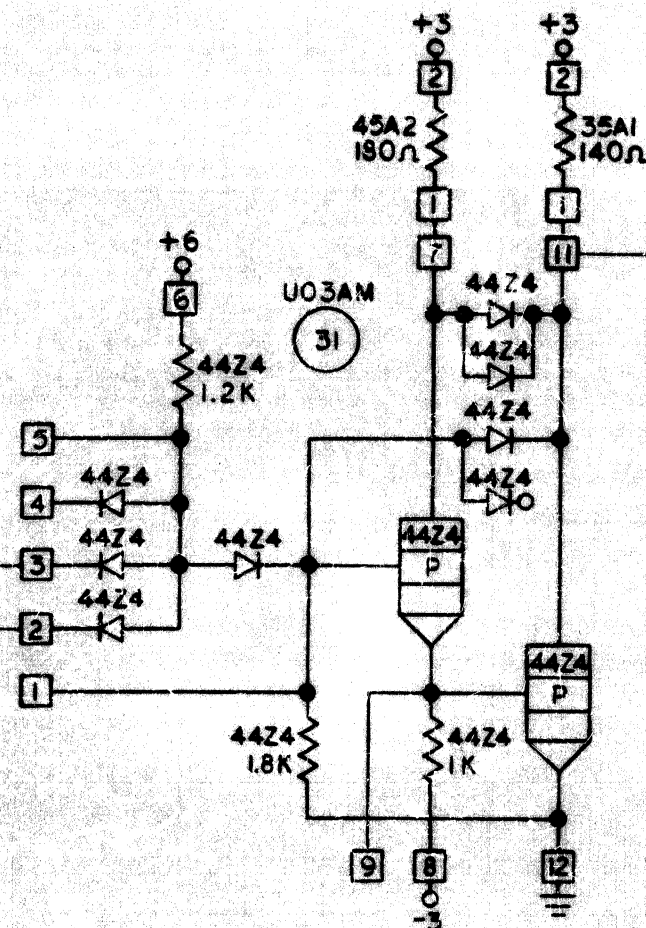


| STANDARD CODE | CIRCUIT AND PACKAGING STANDARD | SYM | DATE | CHANGE NO. | TEST APPROVED | SYM | DATE | CHANGE NO. | TEST APPROVED | DEVELOPMENT NO. | Q/M |
|---------------|--------------------------------|--------|------|------------|---------------|-----|------|------------|---------------|-----------------|-----|
| 2-7846 | | | | 173276A | | | | | | | |
| CARD CODE | APPROVAL | DATE | | | | | | | | | |
| 1910 | PHS | 1/2/68 | | | | | | | | 5801910 | |

SHEET 10 OF 14

MATCH WITH Q
SHEETS 9, 14 OF 14

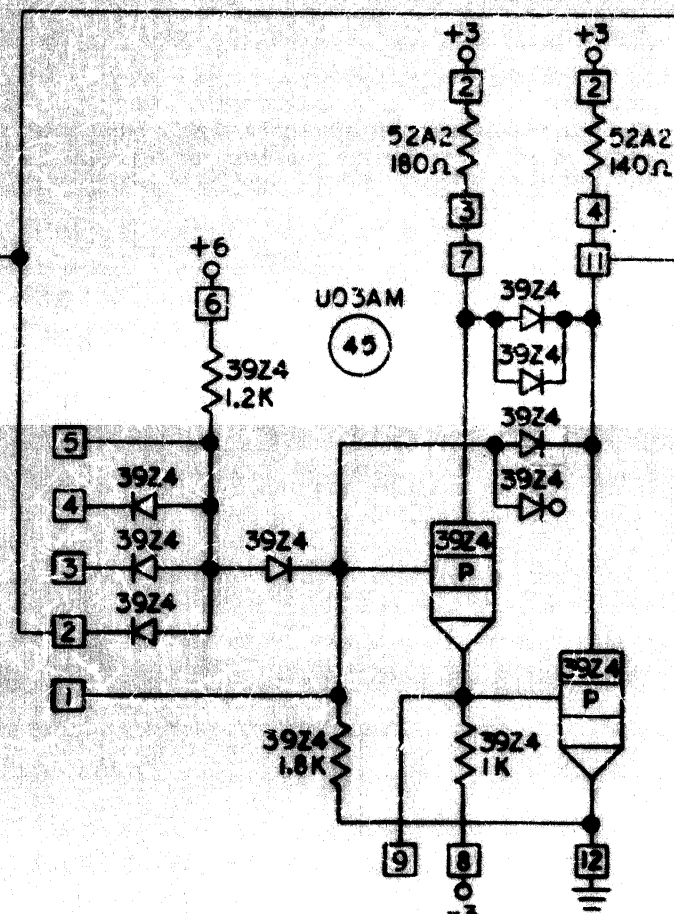
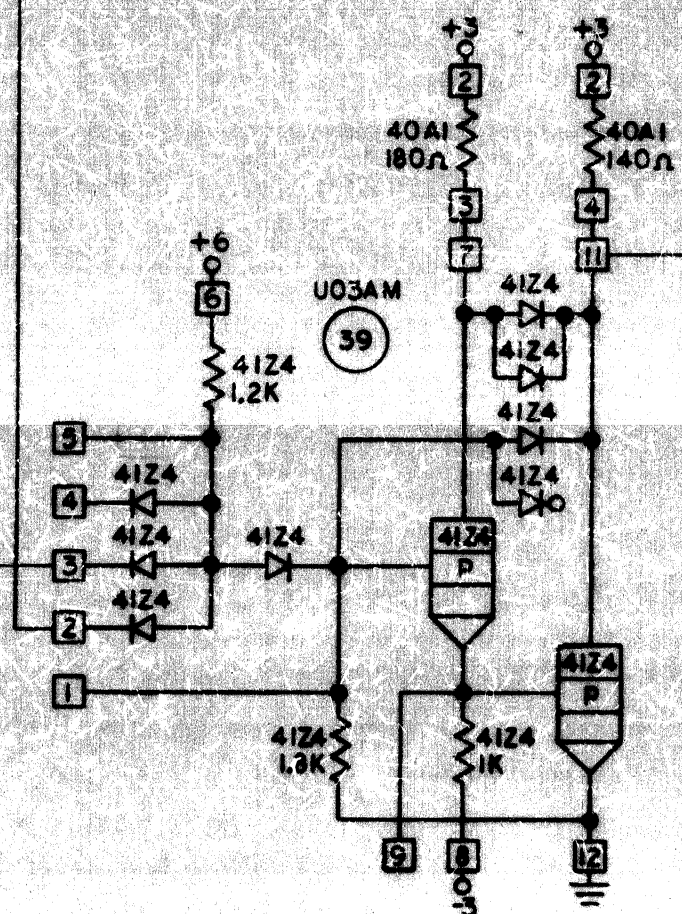
Q5

MATCH WITH R
SHEET 11 OF 14MATCH WITH S
SHEET 11 OF 14MATCH WITH T
SHEET 11 OF 14

J04

MATCH WITH W
SHEETS 8, 11, 12, 14
OF 14

W5



5801910

C

| INTERNATIONAL BUSINESS MACHINES CORP | | | |
|--------------------------------------|------------------|-------|-------|
| NAME | CARD ASM-COUNTER | | |
| CONTROL | | | |
| DESIGN | ADC 1-2-68 | TYPE | APM-1 |
| DETAIL | ADC 1-2-68 | SCALE | NONE |
| CHECK | ADC 1-5-68 | DRW | |
| APPROV | PHS 1-2-68 | CHECK | |